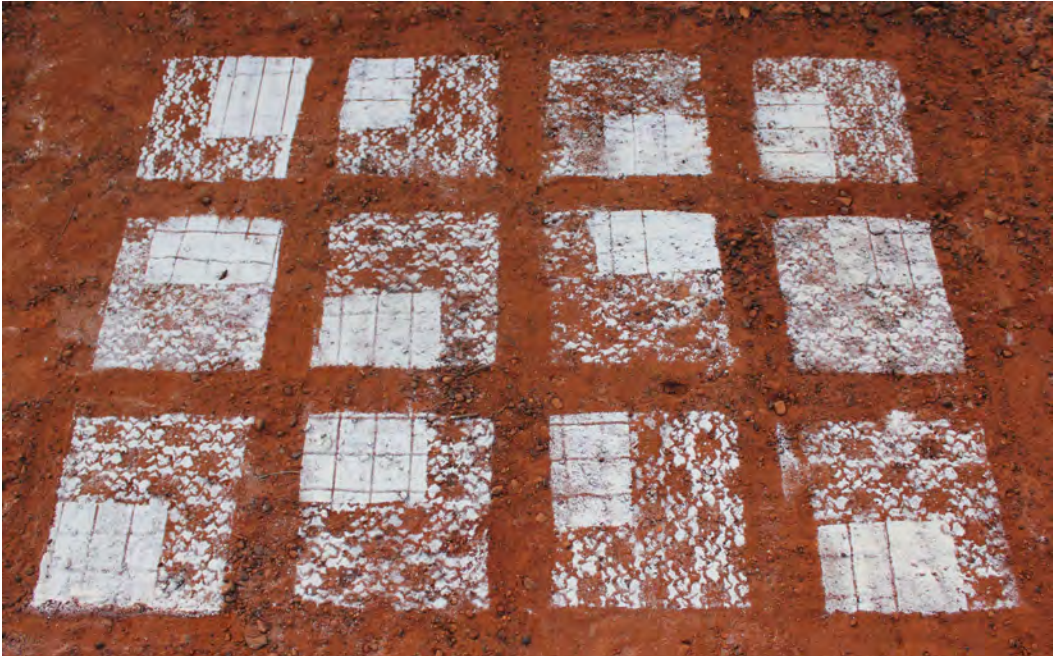


MARIANNE PENBERTHY
FLOUR ON THE GROUND 2014

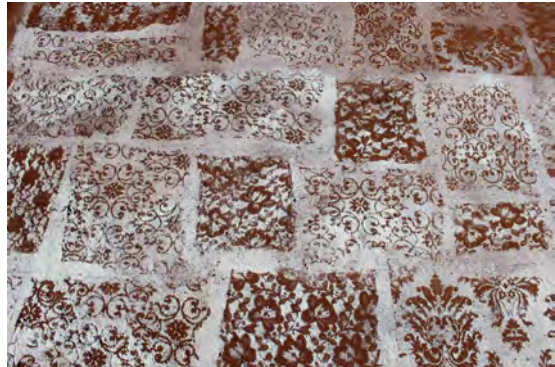
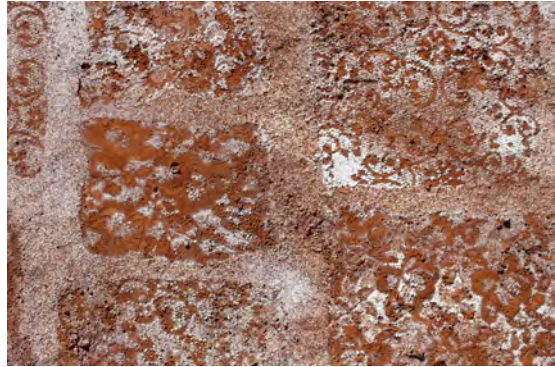


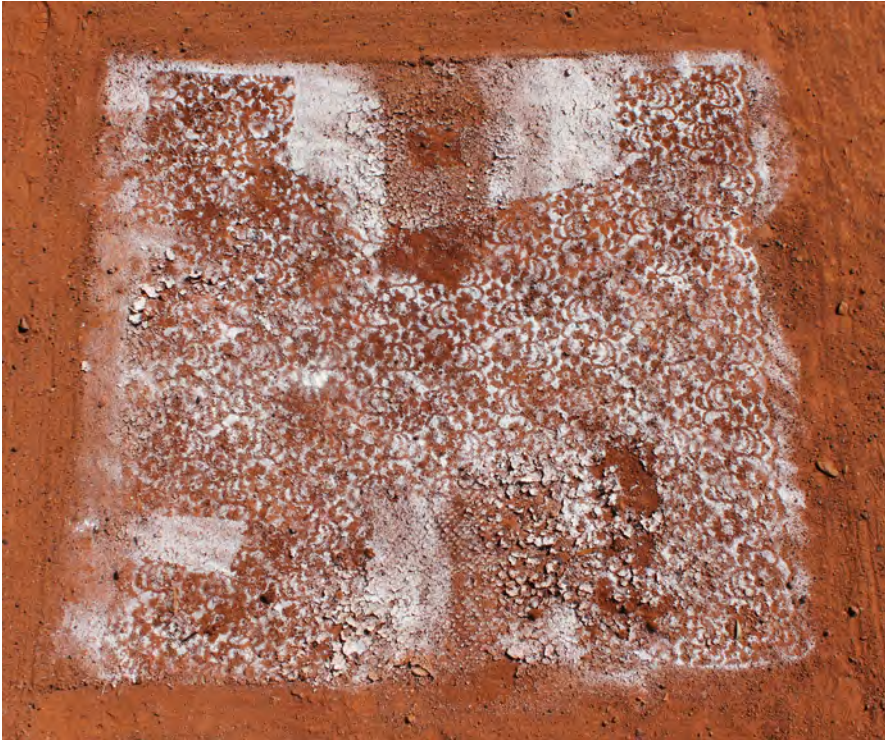


Sifted Lace Fragment 2014



Ground Quilt 2014





Lace Flour Memory 2014



Ground Bojagi Grid 2014



Brown Rocks, White Flour 2014



Mulga Twig Grids 2014



Ground Bandages 2014



Tree Lines (left) and detail 2014



Stitching a Path (left) and detail 2015

DETAILS OF WORKS

Sifted Lace Fragment 2014

About 95 x 190cm, ground installation, Western Australia

Flour and lace

Ground Quilt 2014

About 140 x 135cm, ground installation, Western Australia

Flour and lace

Lace Flour Memory 2014

About 130 x 150cm, ground installation, Western Australia

Flour and lace

Ground Bojagi Grid 2014

About 1.4m x 1.9m, ground installation, Western Australia

Flour and water

Brown Rocks, White Flour 2014

About 270 x 220 x 260cm, ground installation, Western Australia

Flour, lace, rocks

Mulga Twigs Grids 2014

Each panel about 30 x 230cm, ground installation, Western Australia

Twigs, dirt, flour and lace

Ground Bandages 2014

Each bandage about 30 x 180cm, ground installation, Western Australia

Flour and water

Tree Lines 2014

About 5m x 10m

Ground drawing, Western Australia

Stitching a Path 2014

About 9m x 1m, ground installation, Western Australia

Twigs, flour and water

All images © Marianne Penberthy 2014

Design by

ARTPAGES

artpages.com.au